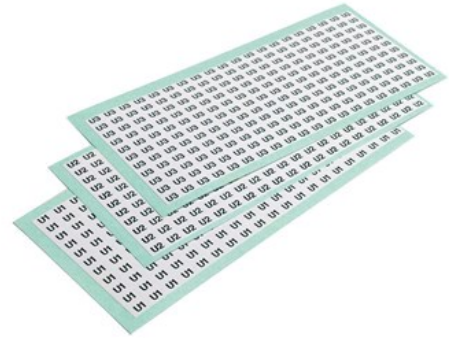


## WRAPAROUND CABLE MARKERS ANS

*self adhesive, self laminating, square corners, precut*

Adhesive pre-printed strips for the temporary or permanent marking of insulated and uninsulated conductors. ANS strips may be used in the production of electric motors as the material will withstand the oven temperatures at which the insulating resins of stators and rotors are baked. Also available with numeric and alphanumeric combinations and progressions.



CERTIFICATES 

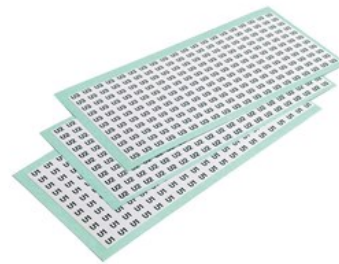


2011/65/EU

# WRAPAROUND CABLE MARKERS ANS

## *Technical characteristics*

Min operating temperature range	-40 °F
Max operating temperature range	302 °F
Min application temperature	50 °F
Max application temperature	104 °F
Material	Polyester film
Adhesive	yes



# WRAPAROUND CABLE MARKERS ANS

## List of products

ANS						
Type	Height	Length	Quantity per sheet	Pack qty	Printed text	Color
ANS 25109-	0.31 in.	2.56 in.	20	300		White
ANS 25109-A	0.31 in.	2.56 in.	20	300	A	White
ANS 25109-B	0.31 in.	2.56 in.	20	300	B	White
ANS 25109-C	0.31 in.	2.56 in.	20	300	C	White
ANS 25109-D	0.31 in.	2.56 in.	20	300	D	White
ANS 25109-E	0.31 in.	2.56 in.	20	300	E	White
ANS 25109-F	0.31 in.	2.56 in.	20	300	F	White
ANS 25109-G	0.31 in.	2.56 in.	20	300	G	White
ANS 25109-H	0.31 in.	2.56 in.	20	300	H	White
ANS 25109-I	0.31 in.	2.56 in.	20	300	I	White
ANS 25109-R	0.31 in.	2.56 in.	20	300	R	White
ANS 25109-S	0.31 in.	2.56 in.	20	300	S	White
ANS 25109-T	0.31 in.	2.56 in.	20	300	T	White
ANS 25109-U	0.31 in.	2.56 in.	20	300	U	White
ANS 25109-V	0.31 in.	2.56 in.	20	300	V	White
ANS 25109-W	0.31 in.	2.56 in.	20	300	W	White
ANS 25109-Y	0.31 in.	2.56 in.	20	300	Y	White
ANS 25109-X	0.31 in.	2.56 in.	20	300	X	White
ANS 25109-Z	0.31 in.	2.56 in.	20	300	Z	White
ANS 25109-0	0.31 in.	2.56 in.	20	300	0	White
ANS 25109-1	0.31 in.	2.56 in.	20	300	1	White
ANS 25109-10	0.31 in.	2.56 in.	20	300	10	White
ANS 25109-11	0.31 in.	2.56 in.	20	300	11	White
ANS 25109-12	0.31 in.	2.56 in.	20	300	12	White
ANS 25109-2	0.31 in.	2.56 in.	20	300	2	White
ANS 25109-20	0.31 in.	2.56 in.	20	300	20	White
ANS 25109-21	0.31 in.	2.56 in.	20	300	21	White
ANS 25109-22	0.31 in.	2.56 in.	20	300	22	White
ANS 25109-23	0.31 in.	2.56 in.	20	300	23	White

ANS 25109-24	0.31 in.	2.56 in.	20	300	24	White
ANS 25109-25	0.31 in.	2.56 in.	20	300	25	White
ANS 25109-26	0.31 in.	2.56 in.	20	300	26	White
ANS 25109-27	0.31 in.	2.56 in.	20	300	27	White
ANS 25109-43	0.31 in.	2.56 in.	20	300	43	White
ANS 25109-44	0.31 in.	2.56 in.	20	300	44	White
ANS 25109-45	0.31 in.	2.56 in.	20	300	45	White
ANS 25109-3	0.31 in.	2.56 in.	20	300	3	White
ANS 25109-4	0.31 in.	2.56 in.	20	300	4	White
ANS 25109-5	0.31 in.	2.56 in.	20	300	5	White
ANS 25109-6	0.31 in.	2.56 in.	20	300	6	White
ANS 25109-7	0.31 in.	2.56 in.	20	300	7	White
ANS 25109-8	0.31 in.	2.56 in.	20	300	8	White
ANS 25109-9	0.31 in.	2.56 in.	20	300	9	White
ANS 25109-U1	0.31 in.	2.56 in.	20	300	U1	White
ANS 25109-U2	0.31 in.	2.56 in.	20	300	U2	White
ANS 25109-U3	0.31 in.	2.56 in.	20	300	U3	White
ANS 25109-U4	0.31 in.	2.56 in.	20	300	U4	White
ANS 25109-U5	0.31 in.	2.56 in.	20	300	U5	White
ANS 25109-U6	0.31 in.	2.56 in.	20	300	U6	White
ANS 25109-U7	0.31 in.	2.56 in.	20	300	U7	White
ANS 25109-U8	0.31 in.	2.56 in.	20	300	U8	White
ANS 25109-U9	0.31 in.	2.56 in.	20	300	U9	White
ANS 25109-U10	0.31 in.	2.56 in.	20	300	U10	White
ANS 25109-U11	0.31 in.	2.56 in.	20	300	U11	White
ANS 25109-U12	0.31 in.	2.56 in.	20	300	U12	White
ANS 25109-V1	0.31 in.	2.56 in.	20	300	V1	White
ANS 25109-V2	0.31 in.	2.56 in.	20	300	V2	White
ANS 25109-V3	0.31 in.	2.56 in.	20	300	V3	White
ANS 25109-V4	0.31 in.	2.56 in.	20	300	V4	White
ANS 25109-V5	0.31 in.	2.56 in.	20	300	V5	White
ANS 25109-V6	0.31 in.	2.56 in.	20	300	V6	White
ANS 25109-V7	0.31 in.	2.56 in.	20	300	V7	White
ANS 25109-V8	0.31 in.	2.56 in.	20	300	V8	White
ANS 25109-V9	0.31 in.	2.56 in.	20	300	V9	White

ANS 25109-V10	0.31 in.	2.56 in.	20	300	V10	White
ANS 25109-V11	0.31 in.	2.56 in.	20	300	V11	White
ANS 25109-V12	0.31 in.	2.56 in.	20	300	V12	White
ANS 25109-W1	0.31 in.	2.56 in.	20	300	W1	White
ANS 25109-W2	0.31 in.	2.56 in.	20	300	W2	White
ANS 25109-W3	0.31 in.	2.56 in.	20	300	W3	White
ANS 25109-W4	0.31 in.	2.56 in.	20	300	W4	White
ANS 25109-W5	0.31 in.	2.56 in.	20	300	W5	White
ANS 25109-W6	0.31 in.	2.56 in.	20	300	W6	White
ANS 25109-W7	0.31 in.	2.56 in.	20	300	W7	White
ANS 25109-W8	0.31 in.	2.56 in.	20	300	W8	White
ANS 25109-W9	0.31 in.	2.56 in.	20	300	W9	White
ANS 25109-W10	0.31 in.	2.56 in.	20	300	W10	White
ANS 25109-W11	0.31 in.	2.56 in.	20	300	W11	White
ANS 25109-W12	0.31 in.	2.56 in.	20	300	W12	White
ANS 25109-F1	0.31 in.	2.56 in.	20	300	F1	White
ANS 25109-F2	0.31 in.	2.56 in.	20	300	F2	White
ANS 25109-X1	0.31 in.	2.56 in.	20	300	X1	White
ANS 25109-X2	0.31 in.	2.56 in.	20	300	X2	White
ANS 25109-Y1	0.31 in.	2.56 in.	20	300	Y1	White
ANS 25109-Y2	0.31 in.	2.56 in.	20	300	Y2	White
ANS 25109-Z1	0.31 in.	2.56 in.	20	300	Z1	White
ANS 25109-Z2	0.31 in.	2.56 in.	20	300	Z2	White
ANS 25109-302	0.31 in.	2.56 in.	20	300	302	White
ANS 25109-309	0.31 in.	2.56 in.	20	300	309	White
ANS 25109-310	0.31 in.	2.56 in.	20	300	310	White
ANS 25109-GND	0.31 in.	2.56 in.	20	300	γ	White
ANS 25109-PLS	0.31 in.	2.56 in.	20	300	+	White
ANS 25109-MLS	0.31 in.	2.56 in.	20	300	-	White